

## **Historic, Archive Document**

Do not assume content reflects current scientific knowledge, policies, or practices.



62

1775

FEB 22 1944

ENTERED IN THE COMPUTER

**R  
O  
G  
E  
R  
S**

**1943**

**S  
E  
E  
D  
S**

LIBRARY  
PROTECTION OFFICE  
DEPARTMENT OF AGRICULTURE

P  
U

PLANT  
*War Gardens*  
FOR  
VICTORY

ROGERS BROS. SEED CO.

*Breeders & Growers*

Chicago, Ill. 308 West Washington Street

U. S. A.

BEANS — BUSH GREEN POD

BLACK VALENTINE (Old Style) 54 Days

Pods are 6 inches long, slim straight, semi-round, dark green.

*Strings.* Good Shipper.

BOUNTIFUL 51 Days

Pods are 7 inches long, straight broad, flat, light green color.

*Stringless.*

BURPEES STRINGLESS (Landreths) 54 Days

Pods are 6 to 7 inches long, fairly straight, round, dark green.

*Stringless.* CANNING VARIETY.

DIXIE WHITE 53 Days

Pods 4 inches long, round, straight, stringless when young, wonderful yielder. Excellent as a dry shell bean. Popular in the South.

FULL MEASURE 60 Days

Pods are 6 inches long, fairly straight, round, dark green.

*Stringless.* CANNING VARIETY.

FRENCH HORTICULTURAL 70 Days

Pods are 7 inches long, flat, broad, green streaked with red.

*Strings.* Showy-variety

GIANT STR'GL'S. 56 Days

Pods are 6 inches long, round, fairly straight, light green.

*Stringless.* CANNING VARIETY.

## BEANS — BUSH GREEN POD

IDAHO REFUGEE 66 Days

Pods are 5½ inches long, round, slightly curved, medium green.

**Stringless.** CANNING VARIETY.

Mosaic Resistant.

LANDRETHS STRINGLESS 54 Days

Pods are 6 to 7 inches long, fairly straight, round, dark green.

**Stringless.** CANNING VARIETY.

Replacing Burpees Stringless largely.

NEW STRINGLESS (Tendergreen) 56 Days

Pods are 6 inches long, round, medium dark, slightly curved.

**Stringless.** CANNING VARIETY.

PLENTIFUL (Black Seeded Bountiful) 53 Days

Pods are similar to Bountiful, except that they are slightly thicker, a trifle longer and a little darker green. Straight.

**Stringless.** Black seeded.

RED KIDNEY (Dark) 62 Days

Pods are 5 inches long, broad, flat and stringy. Seed is mahogany red. Packed by canners in dry stage.

RED VALENTINE (O. S.) 54 Days

Pods are 6 inches long, fairly straight but stringy.

ROGERS STGLS. BLACK VAL. 55 Days

Pods are 6 inches long, round, dark green and fairly straight.

**Stringless.** Excellent quality.

## BEANS — BUSH GREEN POD

ROGERS SENSATION REFUGEE 64 Days  
No. 1066

Pods are 5½ inches long, round, straight, medium green and **Stringless**. Mosaic Resistant.

An outstanding new canning variety.

ROGERS SENSATION REFUGEE 67 Days  
No. 1071

Pods are 5½ inches long, round, straight, medium green and **Stringless**. Mosaic Resistant.

Companion to 1066. CANNING VARIETY

RUBY DWARF HORTICULTURAL 58 Days

Pods are 5 inches long, broad, flat, light green streaked with red.

**Stringless**. Very good yielder.

STREAMLINER (Granda) 50 Days

Pods are 8 to 10 inches long, flat, tender, free from fibre.

**Stringless**. White seeded.

STRINGLESS BLACK VALENTINE 55 Days

Pods are 6 inches long, slightly curved, oval or semi-flat, dark green, very good quality.

**Stringless**. Good shipper.

STRINGLESS RED VALENTINE 54 Days

Pods are 5 inches long, round somewhat curved, a selection from old style Red Valentine.

**Stringless**.

TENNESSEE GREEN POD 52 Days

Pods are 7 inches long, very broad, flat, dark green. Stringy. Popular in the South. Very early.

## BEANS — BUSH WAX POD

- BRITTLE (Round Pod Kidney)** 62 Days  
Pods are 5½ inches long, very slightly curved, round, deep yellow. White seed with black eye.  
*Stringless.* CANNING VARIETY.
- DAVIS STRINGLESS WHITE WAX** 52 Days  
Pods are 6 to 6½ inches long, flat, slightly curved, light yellow.  
*Stringless.* White seeded.
- PENCIL POD BLACK WAX** 59 Days  
Pods are 6 inches long, round, slightly curved, deep yellow.  
*Stringless.* Black seeded.
- STRINGLESS KIDNEY WAX (IMPVD)** 62 Days  
Pods are 6 inches long, oval, quite straight, deep yellow. White seed, with black eye.  
*Stringless.* CANNING VARIETY.
- SURE CROP (BOUNTIFUL WAX)** 62 Days  
Pods are 6½ inches long, flat straight, deep yellow.  
*Stringless.* Black seeded.
- TOP NOTCH GOLDEN WAX (IMP. GOL)** 50 Days  
Pods are 5 inches long, flat straight and yellow. White seed, brown eye.  
*Stringless.*
- UNRIVALLED WAX** 51 Days  
Pods are 5 inches long, narrow, fairly straight, yellow, fleshy. Seed small, glossy brown.  
*Stringless* when young.



**BEANS — BUSH WAX POD**

**ROGERS SENSATIONAL WAX**



***An outstanding new Wax canning variety — hardy and Prolific — a Rogers origination.***

## BEANS — BUSH WAX POD

ROGERS SENSATION WAX No. 1 58 Days

Pods 5½ inches long, slimmer than Brittle Wax, deep golden yellow, straight, round. Seed white with brown eye. Gives heavy first pick to start off season. Designed for whole bean canning.

ROGERS SENSATION WAX No. 2 62 Days

Pods are 6 inches long, slimmer than Brittle Wax, straight, round, deep golden yellow. White seed with brown eye. Designed for whole bean canning.

ROGERS SENSATION WAX No. 3 62 Days

Pods are 6 inches long, straight, round, deep golden yellow. White seed with brown eye. Stringless. Same size as Brittle Wax. Designed for cut bean canning.

## BEANS — POLE

BLUE LAKES (Rogers) 65 Days

Vine, 5 foot. Pods, 6 inch, straight, round, dark green. *Stringless* at all stages. Very prolific. White-seeded. CANNING VARIETY.

IDEAL MARKET 60 Days

Vine, 3½ foot, fine foliage. Pods, 5 inches long, round, slightly curved, silver green, *Stringless* when young. Seed, oblong, jet black. 105 per oz.

## BEANS — POLE

KY. WONDER (Old Homestead) 65 Days

Vine, 5 foot, vigorous, large crumpled medium green leaves. Pods, 8½ inch, round, curved, silver green, brittle, almost *Stringless*. Seed, buff, brown, reniform, flat, oval. 88 per oz.

KY. WONDER WAX 70 Days

Vine, 4 foot, open, good climber, dull green. Pods, 8 inch, flat, fleshy, curved, glossy yellow. Seed, flat, wrinkled, chocolate. 85 per oz.

LONDON HORTICULTURAL 70 Days

Vine, 4½ foot, compact, pink flower, climber. Pods, 7 inch, oval, straight, fibreless, *Stringless*. Seed, buff, with dark red markings, almost round. 55 per oz.

McCASLAN 65 Days

Vine, 4 foot, bright green, good climber. Pods 7½ inch, dark green, flat-oval. *Stringless*. Seed, white, kidney-shaped, long. 80 per oz.

ROGERS STGLS. BLACK CREASEBACK 65 Days

Vine, 5 foot, dark green, climber, purple flowers. Pods, 7 inches long, straight, round, *Stringless* at all stages. Black seeded.

IN EVERY WAY SUPERIOR TO IDEAL MARKET.

SCARLET RUNNER 90 Days

Vine, 12 foot, rank open, gray-green. Pods, 8 inch, flat, oval, straight, thick, coarse surface. Seed plump, long, oval, bluish-violet mottled with blue-black. 25 per oz.

## BEANS — POLE

STRIPED CREASEBACK 70 Days

Vine, 4½ foot, climber, dark green, purple stems, very hardy. Pods, 7 inch, medium green, round, straight, somewhat stringy. Seed, plump, oval, tan with black stripes. 105 per oz.

ST. LOUIS PERFECTION 62 Days

Vine, 4 foot, large, medium green, open leaves. Pods, 8 inch, straight, round, *Stringless*, fleshy, silver green. Seed, white, very plump. 65 per oz.

TENNESSEE WONDER 71 Days

Vine, climber, green foliage, purple stems, bluish-pink flower. Pods, straight, gray-green, crease-back, double barrelled, somewhat stringy. Seed, brownish-gray, dark gray stripes. Kidney shaped. 70 per oz.

WHITE CREASEBACK 63 Days

Vine, 4 foot, dull green, climber, white flower. Pods, 5 inch, slightly curved, round, medium dark green. *Stringless* when young. Seed, ivory white, round oval.

WHITE DUTCH RUNNER 90 Days

Vine, 12 foot, open, rank, gray-green. Pods, 8 inch, flat, oval, coarse, gray-green. Seed, white, smooth, plump, long oval. 20 per oz.

YARD LONG (Asparagus) 70 Days

Vine, 6 foot, rank, dark green wrinkled leaf. Pods, 18 to 26 inch, tough except when young. Seed, reddish brown to tan. 194 per oz.

**BEANS — BUSH LIMA**

**BABY FORDHOOK BUSH** 70 Days

Bush, 14 inch, erect, runnerless, dark glossy green. Pods, 2½ inch with 3 to 4 beans.

**CANNING VARIETY.**

**BURPEE BUSH** 75 Days

Bush, 20 inch, compact, runnerless, dark, green. Pods, 5 inch, flat, curved, with 3 to 4 beans. Seed large flat, wrinkled. 25 per oz.

**BURPEE IMPROVED BUSH** 75 Days

Bush, 20 inch, compact, runnerless, erect, dark green. Pods, 5½ inch, curved, flat, with 3 to 5 beans. Seed, large, creamy white. 23 per oz.

**FORDHOOK BUSH** 75 Days

Bush 19 inch, gray-green. Pods, 5 inch, straight to re-curved, thick, plump. 3 to 5 beans. Seed, potato type, dimpled, greenish-white. 21 per oz.

**HENDERSON BUSH** 65 Days

Bush, 16 inch, erect, runnerless, dark, glossy green. Pods, 3½ inch, curved, flat, dark green with 3 to 4 beans. Seed, small, white, flat.

**CANNING VARIETY. Freezer.** 90 per oz.

**ILL. BABY POTATO BUSH** 72 Days

Bush, 16 inch, erect, runnerless, dark, glossy green. Pods, 2¾ inch with 3 beans.

**CANNING VARIETY.** 75 per oz.

## BEANS — BUSH LIMA

### JACKSON WONDER BUSH

65 Days

Bush, 16 inch, erect, runnerless, dark glossy green. Pods, 3½ inch, flat, curved, 2 to 4 beans. Seed, flat cinnamon splashed with deep violet.  
75 per oz.

### THOROGREEN BUSH

68 to 70 Days

Bush, 16 inch, erect, runnerless, dark, glossy green. Pods, 3½ inch curved, flat with 2 to 4 beans. Same habit etc. as Henderson Bush, except for distinguishing feature of green cotyledons.

CANNING VARIETY — FREEZER.

---

## BEANS — POLE LIMA

### BURPEE'S BEST (Fordhook Pole)

90 Days

Vine, 12 ft., very rank, dark green, with gray-green leaf markings. Pods, 4½ inch, straight backed, thick, plump, 3 to 4 beans. Seed, potato type, dimpled, green tinted.  
35 per oz.

### CARPINTERIA

88 Days

Vine, 8 to 10 ft., bright dark green. Pods 5½ inch, curved, flat, 3 to 5 beans. Seed, large, green tinted, to creamy white, smooth, semi-circular.  
25 per oz.

**BEANS — POLE LIMA**

**CHALLENGER** 90 Days

Vine, 12 ft., very rank, dark green. Gray-green markings on the leaf. Pods, 4½ inch, straight backed, thick, plump, 3 to 4 beans. Seed, potato type, dimpled green tinted. 35 per oz.

**FLORIDA BUTTER** 90 Days

Vine, 8 to 10 ft., bright, dark green. Pods, 3½ inch, curved, flat, 3 to 4 beans. Seed, small, cream streaked with deep violet and purplish brown. 90 per oz.

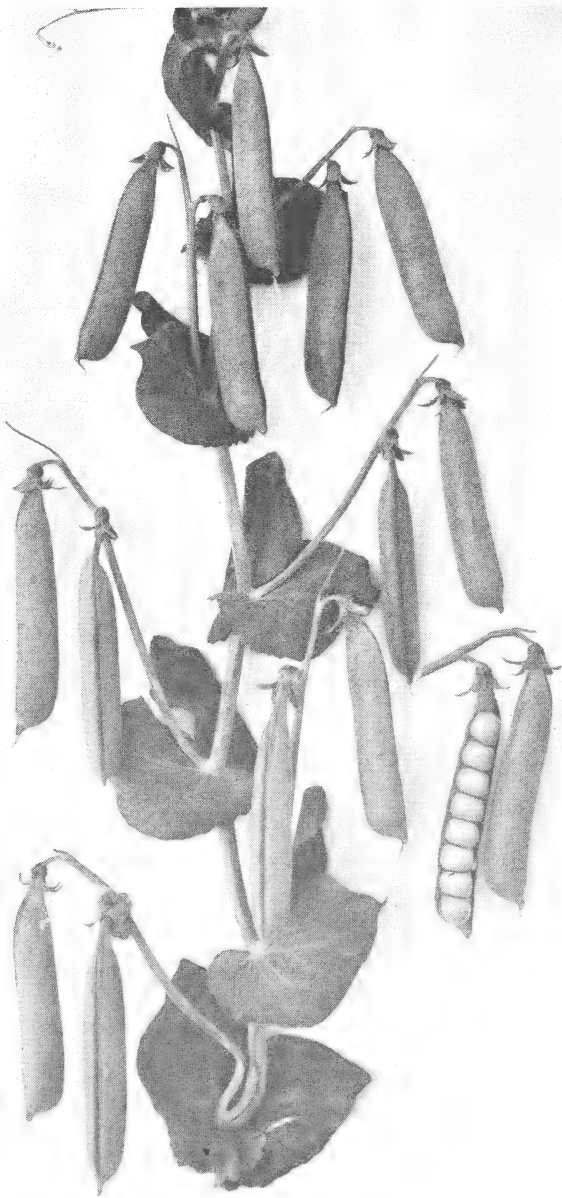
**KING OF THE GARDEN** 88 Days

Vine, 8 to 10 ft., bright, dark, green. Pods, 5½ inch, curved, flat, 3 to 5 beans. Seed, large, smooth, green-tinted, to creamy white, semi-circular. 25 per oz.

**SIEVA (Carolina)** 75 Days

Vine, 8 to 10 ft., rank, green foliage, good climber, continuous bearer. Pods, 3 inch, curved, flat, 2 to 4 beans. Seed small, white, smooth. 90 per oz.

**PEAS**



**PERFECTION**



## PEAS — GARDEN VARIETIES

**ALDERMAN (Tall Telephone)** 72 Days

Vine.....40 inch, dark, heavy

Pod.....4½ inch, dark, pointed

Seed.....very large, wrinkled

Wilt Resistant — a good FREEZER.

**ALASKA (Rogers)** 58 Days

Vine.....28 inch, light, slim

Pod.....2½ inch, light, blunt

Seed.....medium size, smooth

Cleveland Strain — Wilt Resistant.

**AMERICAN WONDER** 60 Days

Vine.....12 inch, dark, coarse

Pod.....2½ inch, light, blunt

Seed.....medium large, wrinkled

**AMEER (Claudit-Bountiful)** 60 Days

Vine.....30 inch, dark, medium

Pod.....3 inch, dark, pointed

Seed.....large size, smooth

Sometimes called "Long Podded Alaska."

**BLISS EVERBEARING** 80 Days

Vine.....26 inch, dark, heavy

Pod.....3 inch, light, blunt

Seed.....very large, wrinkled

Wilt Resistant.

**DWARF ALDERMAN (Rogers)** 76 Days

Vine.....22 inch, dark, heavy

Pod.....4½ inch, dark, pointed

Seed.....very large size, wrinkled

Wilt Resistant — adapted for freezing.

## PEAS — GARDEN VARIETIES

**DWARF GREY SUGAR** 62 Days

Vine.....24 inch, dark, medium  
Pod.....2<sup>3</sup>/<sub>4</sub> inch, light, pointed  
Seed.....small, grey, smooth

Wilt Resistant.

**DWARF MARKET (Rogers)** 70 Days

Vine.....28 inch, dark, heavy  
Pod.....4 to 4<sup>1</sup>/<sub>2</sub> inch, dark, pointed  
Seed.....very large, wrinkled

Highly recommended for market gardener.

**DWARF TELEPHONE (Daisy)** 75 Days

Vine.....24 inch, light green, heavy  
Pod.....4<sup>1</sup>/<sub>2</sub> inch, light green, pointed  
Seed.....very large, wrinkled

Wilt Resistant.

**GILBO (Rogers)** 69 Days

Vine.....24 to 28 inch, dark, heavy  
Pod.....4<sup>1</sup>/<sub>2</sub> to 5 inch, dark, pointed  
Seed.....very large size, wrinkled

Wilt Resistant — adapted for freezing.

**GIANT PODDED HAMPER (Rogers)** 65 Days

Vine.....22 inch, dark, heavy  
Pod.....4<sup>1</sup>/<sub>2</sub> to 5 inch, dark, pointed  
Seed.....large size, wrinkled

Largest podded early sort we know.

**GRADUS (Early)** 60 Days

Vine.....24 inch, light, medium  
Pod.....4 inch, dark, pointed  
Seed.....large size, wrinkled

## PEAS — GARDEN VARIETIES

**GRADUS (Improved-Rogers)** 65 Days

Vine..... 3 foot, light, medium

Pod..... 4 inch, dark, pointed

Seed..... large size, wrinkled

An excellent freezing variety.

**HUNDREDFOLD (Laxtonian)** 65 Days

Vine..... 18 inch, dark, heavy

Pod..... 4 inch, dark, pointed

Seed..... large size, wrinkled

**ICER No. 95 (Rogers)** 74 Days

Vine..... 24 inch, coarse, dark

Pod..... 4½ to 5 inch, dark, pointed

Seed..... very large size, wrinkled

Wilt Resistant—adapted for freezing.

**LAXTON'S PROGRESS** 64 Days

Vine..... 15 inch, dark, heavy

Pod..... 4½ inch, dark, pointed

Seed..... large size, wrinkled

**LAXTON'S SUPERB** 60 Days

Vine..... 18 inch, light, coarse

Pod..... 4 inch, dark, pointed

Seed..... large, oval, smooth

Sometimes called "Early Bird."

**LITTLE MARVEL** 63 Days

Vine..... 18 inch, dark, medium

Pod..... 3 inch, dark, blunt

Seed..... large size, wrinkled

## PEAS — GARDEN VARIETIES

**MAM. PODDED EXTRA EARLY** 60 Days

Vine.....30 inch, medium, heavy  
Pod.....3—3¼ inch, med. green, blunt  
Seed.....large, oval, smooth

**MARROWFAT (White)** 81 Days

Vine.....4 foot, dark, coarse  
Pod.....2¾ inch, light, blunt  
Seed.....large, white, smooth

**MAMMOTH MELTING SUGAR** 84 Days

Vine.....4½ foot, light green, heavy  
Pod.....4 inch, light green, blunt  
Seed.....large, white, smooth

Wilt Resistant.

**PED. EX. EARLY (First & Best)** 58 Days

Vine.....24 inch, light, slender  
Pod.....2½ inch, light, blunt  
Seed.....medium size, smooth

**PREMIER (Rogers)** 60 Days

Vine.....22 inch, medium heft  
Pod.....2¾ inch, light, blunt  
Seed.....medium size, wrinkled

Replacing Notts Excelsior.

**STRATAGEM (Potlatch)** 83 Days

Vine.....24 inch, dark, heavy  
Pod.....4½ inch, dark, pointed  
Seed.....very large, wrinkled

Wilt Resistant — adapted for freezing.

**PEAS — GARDEN VARIETIES**

**THOMAS LAXTON**

62 Days

Vine.....30 inch, dark, medium

Pod.....3½ inch, dark, blunt

Seed.....large size, wrinkled

An excellent freezing variety.

**WORLD'S RECORD**

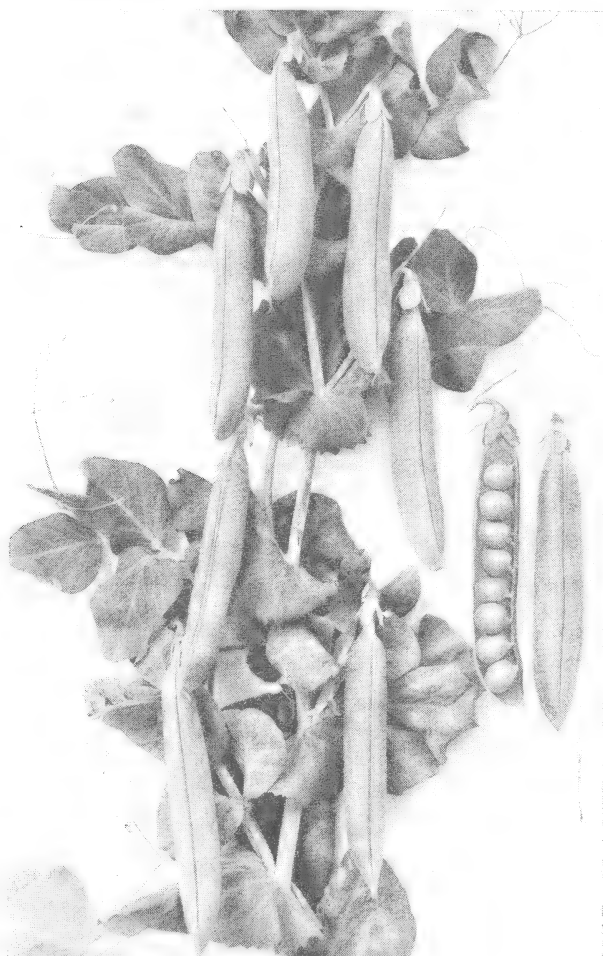
59 Days

Vine.....24 inch, light, medium

Pod.....3½ inch, dark, pointed

Seed.....large size, wrinkled

Wilt Resistant — adapted for freezing.



**ICER — No. 95**

PEAS — CANNING VARIETIES

ALASKA (Rogers) 58 Days

Vine.....28 inch, light, slim  
Pod.....2½ inch, light, blunt  
Seed.....medium size, smooth

Cleveland Strain — Wilt Resistant.

ACE (Rogers) 60 Days

Vine.....32 inch, medium, dark vine  
Pods.....2½ inch, light blunt double  
Seed.....medium sized, and wrinkled

Hardy, Prolific and Wilt Resistant.

ALDERMAN (Tall Telephone) 72 Days

Vine.....40 inch, dark, heavy  
Pod.....4½ inch, dark, pointed  
Seed.....very large, wrinkled

Wilt Resistant — a good FREEZER.

CHIEF (Rogers) 65 Days

Vine.....3 foot, medium heavy, dark  
Pod.....2¾ inch, blunt, light  
Seed.....medium size, wrinkled

CLIMAX (Rogers) 68 Days

Vine.....3 ft., medium dark, slender  
Pod.....2¾ inch, light blunt double  
Seed.....medium size, wrinkled

Wilt Resistant — replacing Gr. Admiral.

EARLY WALES 68 to 70 Days

Vine.....3½ foot, light, medium  
Pod.....3¼ inch, light, blunt  
Seed.....large, green, wrinkled

Wilt Resistant — pods, mostly double.

## PEAS — CANNING VARIETIES

FAMOUS (Rogers) 74 Days

Vine . . . . . 24 inch, fairly heavy, medium dark

Pod . . . . . 3¼ inch, light, blunt, double

Seed . . . . . medium size, wrinkled

GRADUS (Improved-Rogers) 65 Days

Vine . . . . . 3 foot, light, medium

Pod . . . . . 4 inch, dark, pointed

Seed . . . . . large size, wrinkled

An excellent freezing variety.

KAY (Rogers) 70 Days

Vine . . . . . 32 inch, slim, medium dark

Pod . . . . . 2½ inch light, blunt, double

Seed . . . . . small size, wrinkled

Wilt Resistant — air space in ends of pod.

PERFECTION (Rogers) 70 Days

Vine . . . . . 28 inch, fairly heavy, medium dark

Pod . . . . . 3½ inch, light, blunt, double

Seed . . . . . medium sized, wrinkled

High quality . . . . . heavy producer

PERFECTION (Wisconsin) 72 Days

Vine . . . . . 28 inch, medium heavy, dark

Pod . . . . . 3¼ inch, light, blunt

Seed . . . . . medium sized, wrinkled

Wilt Resistant.

PRIDE 65 Days

Vine . . . . . 24 inch, medium, dark

Pod . . . . . 3 inch, blunt, straight, light green

Seed . . . . . medium, green, wrinkled

Wilt Resistant.

## PEAS — CANNING VARIETIES

### PROFUSION 78 Days

Vine.....3 foot, dark, heavy  
Pod.....3 $\frac{1}{4}$  inch, light, pointed  
Seed.....very large, wrinkled

Wilt Resistant.

### SURPRISE 58 Days

Vine.....2 foot, slim, dark  
Pod.....2 $\frac{1}{2}$  inch, light, blunt  
Seed.....medium sized, wrinkled

Original Gregory Strain — refined.

### THOMAS LAXTON 62 Days

Vine.....30 inch, dark, medium  
Pod.....3 $\frac{1}{2}$  inch, dark, blunt  
Seed.....large size, wrinkled

Recommended highly for freezing.

### WINNER (Rogers) 58 Days

Vine.....30 inch, slim, light  
Pod.....2 inch, small, blunt  
Seed.....very small, smooth

Packs over 90% small sieves.

### WISCONSIN EARLY SWEET 58 Days

Vine.....24 inch, slim, medium dark  
Pod.....2 $\frac{1}{2}$  inch, light, blunt  
Seed.....medium size, wrinkled

Wilt Resistant.

### WISCONSIN MERIT 70 Days

Vine.....28 inch, medium heavy  
Pod.....3 $\frac{1}{2}$  inch, light, blunt  
Seed.....medium size, green, wrinkled

Wilt Resistant.



## SWEET CORN



Dr. Wm. L. Brown (right) and assistant, examining plant type and tassel qualities. Sweet corn breeding farms, Minnesota.

## SWEET CORN

ADAMS EXTRA EARLY (First of All. Ideal.

Burlington)

75 Days

Ears — 6 to 7 inch, with 12 to 14 rows of fairly sweet white kernels. Stalk — 6 to 7 ft. A hardy early, heavy yielder. Popular largely in the South.

BANCROSS C-13 (Top Cross)

68 to 70 Days

Ears — 7 inch, with 8 rows of deep yellow kernels. Good quality. Stalk — 4½ ft. For garden and market.

BANKCROSS C-13 (Hybrid)

75 Days

Ears — 7 inch, with 12 to 14 rows of deep yellow kernels. Good quality, sweet and tender. Stalk — 5 ft. For garden and market.

BANCROSS P-39 (Top Cross)

71 Days

Ears — 7 inch, with 8 to 12 rows of deep yellow kernels. Good quality. Stalk — 4½ to 5 ft. Rugged, prolific, early market garden variety.

BURBANK BANTAM

80 to 84 Days

Ears — 7 to 8 inch, with 12 to 14 rows of deep yellow kernels. Equal in flavor to 8-row Bantam. Stalk — 5 to 6 ft. Produces well under adverse conditions, garden and market, also canning and freezer variety.

## SWEET CORN

### BURBANK NORTHERN CROSS (Select Top Cross)

84 to 88 Days

Ears — 8 to 9 inch, with 12 to 14 rows of deep yellow kernels. Good quality, and nice uniformity of ear size and maturity. Stalk — 6 to 7 ft. Hardy, prolific, resistant to wilt and ear worm. For garden, market, canning and freezing.

### CARMELCROSS

74 to 76 Days

Ears — Large eared, 7½ inch, 12 to 16 rows broad, medium depth yellow kernels. High quality, better than Whipcross C6 X C2, more slender than Marcross C6 X C13. Stalk — 6 to 6½ ft., larger than Marcross C6 X C13. Early midseason, a cross of inbreds P39 X C13. Recommended especially for New England and Northeastern states.

### COUNTRY GENTLEMAN

95 Days

Ears — 7 to 8 inch, deep white, slender kernels, with no row formation. Tender, sweet, excellent flavor. Small cob. Flag leaves. Stalk — 6½ ft. Garden, market and canning.

### COUNTRY GENTLEMAN V U H

95 to 100 Days

Ears — 8 inch, with deep, tender, white kernels. No row formation. Medium cob. Good quality. Stalk — 6½ ft. Developed for canning. A hardy strain, with good uniformity of maturity and ear size.

### COUNTRY GENTLEMAN ILLS. 3 x 6, (Hybrid)

90 Days

Ears — 6½ to 7 inch, with very deep, slender white kernels, of good quality. Some flag leaves. Stalk — 6½ ft. A fine quality corn, yields well with good cut per ton. Produced from carefully bred, selected inbred strains.

## SWEET CORN

### COUNTRY GENTLEMAN ILLS. 5 x 10 (Hybrid)

90 Days

Ears — 7 inch, with slightly larger white kernels than 3 x 6. A very high quality corn, yielding high cut per ton. Stalk — 6½ to 7 ft. Produced from carefully bred selected inbreds. Quite uniform in ear size and maturity. Some flag leaves.

### COUNTRY GENTLEMAN ILLS. 8 x 6. (Hybrid)

90 Days

Ears — 7 to 8 inch, with very deep, small, tender white kernels. Outstanding quality and cut per ton. Uniform. Some flag leaves. Stalk — 7 ft. Produced from carefully bred and selected inbreds.

### EARLY EVERGREEN

90 to 93 Days

Ears — 8 inch, with 14 to 18 rows of medium size deep, white kernels of good quality and sweetness. Stalk — 6 to 7 ft. Market garden and canning selected strain in the evergreen class.

### GILLS GOLDEN EARLY MARKET

68 Days

Ears — 5½ to 6 inch, with 12 rows of fairly broad yellow kernels, of fine quality. Stalk — 4 to 5 ft. Used extensively for garden and market. Also known as "GOLDEN HUMMER", "EXTRA EARLY YELLOW", "EXTRA EARLY SWEET", and "GILLS GOLDEN EARLY SWEET".

### GOLDEN BANTAM 8 ROWED

78 to 80 Days

Ears — 6 to 7 inch, with 8 rows of kernels of highest flavor and sweetness. No flag leaves. Stalk — 4½ to 5 ft. An excellent selected Northern strain, hardy and well known.

## SWEET CORN

### GOLDEN BANTAM, HARRIS EXTRA EARLY

70 Days

Ears — 6½ inch, with 8 rows of fairly large kernels, deep, yellow, tender, prolific, often with two ears per stalk. Stalk — 4 to 4½ ft. For home garden, filling a need for a good quality early Bantam.

### GOLDEN CROSS HYBRID

88 Days

Ears — 8 to 9 inch, with 10 to 16 rows of light golden kernels. Sweet and tender. High yielder, resistant to wilt. Very uniform. Stalk — 5½ to 6 ft. A hardy resistant corn, the foremost yellow hybrid on the market today. Garden, market, canning and freezing. Very wide range of adaptability.

### GOLDEN or BANTAM EVERGREEN 85 to 90 Days

Ears — 8 inch, with 12 to 14 rows of medium width kernels, good quality. Stalk — 6 to 7 ft. A cross between Golden Bantam and Stowells Evergreen. Market and canning.

### GOLDEN GIANT

80 to 85 Days

Ears — 6½ to 7 inch, with 10 to 14 rows of rather narrow deep yellow kernels of good quality. Stalk — 5½ to 6 ft. A cross between Howling Mob and Golden Bantam. Garden and market.

### GOLDEN SUNSHINE

72 to 76 Days

Ears — 6 inch with 10 to 12 rows of narrow, deep, yellow kernels of fine quality. Stalk — 4 to 5 ft. Fine for early market and garden, especially in the northern district.

## SWEET CORN

HYBRID 6664 68 Days

Ears — 7 to 8 inch, with 8 rows of small, deep, yellow kernels. Very high quality. Exceptionally tender and sweet. Stalk — 4½ to 5 ft. A new hybrid for garden, market, and whole ear pack. First trials in 1940 all resulted in good reports.

IOANA (Hybrid) 90 Days

Ears — 9 inch, with 12 to 14 rows of medium width, deep yellow kernels, of excellent quality. Uniform. Stalk — 6 to 6½ ft. A new high yielding hybrid destined to be popular, 1939 and 1940 reports quite favorable. Canning.

IOGENT 12 (Hybrid) 96 Days

Ears — 7 to 7½ inch, deep white kernels, no row formation. Tender and sweet, high quality, and good cut per ton. Stalk — 7 to 7½ ft. Heavy foliage, some flag leaves. Canning and freezing.

IOGENT 27 (Hybrid) 96 Days

Ears — 7 to 8 inch, deep white kernels, no row formation, rather large ears. Tender and sweet. Several flag leaves. Stalk — 7 to 8 ft. Abundant foliage. Packs excellent white. Past three years show good reports, and growing demand. Canning and freezing.

ILLINOIS GOLDEN HYBRID No. 10 (73C x 101Q)

Ears — 7½ inches, medium thickness, 12 to 16 rows, deep, medium width and medium orange kernels tender and sweet, ear tips well covered. Short shank. Excellent uniformity. Stalk — 7 feet, dark green, thick sturdy, very few suckers, one to two ears. Tassels — large, no blasting. Silks — inner, light; outer, red. Season — about 89 days. Remarks — No lodging, few flag leaves, smut slight. Excellent for canning or market.

## SWEET CORN

### ILLINOIS GOLDEN HYBRID No. 11 (73C x 87A)

Ears — 8 inches, slender, 12 to 14 rows fairly deep medium width and light orange kernels. Tender and sweet, ear tips fairly well covered. Short shank. Stalk — 6½ feet, sturdy, dark green, few suckers, one to two ears. Tassels — very large, no blasting. Silks — inner, light; outer, red. Season — about 85 days. Remarks — no lodging, few short flag leaves. Smut slight. Excellent for canning or market.

### LINCOLN

82 Days

Ears — 7 to 8 inches, 12 to 16 rows medium narrow kernels, of good quality. Stalk — 6½ to 7 ft. erect, resists lodging, ears borne high. A cross of inbreds P39 X C23, designed to replace the old Whipcross P39. Primarily for market gardeners wanting large early ears.

### MARCROSS C-13 x 6 (Hybrid)

71 Days

Ears — 6 to 7 inch, with 12 to 14 rows of fairly large yellow kernels. Fairly good quality. Stalk — 4½ to 5 ft. Garden and market, quite well known in the East.

### MARCROSS NORTHERN (Selected Top Cross)

68 to 73 Days

Ears — 6½ to 7 inch, 12 to 16 rows of medium width, yellow, deep kernels. Sweet, tender. Stalk — 5½ ft. A popular large eared early sort for market garden. Growing demand.

### NARROW GRAIN EVERGREEN

95 to 100 Days

Ears — 8 to 9 inch, 18 to 20 rows of very deep slender white kernels. Sweet and tender. Some flag leaves. Stalk — 7 to 8 ft. Very popular strain for yield and uniformity. Canning.

## SWEET CORN

### NARROW GRAIN EVERGREEN ILLS. 14 x 13

(Hybrid)

93 Days

Ears — 8 to 9 inch, 18 rows of very deep medium width white kernels, of fine quality. Tender and sweet. Few flag leaves. Stalk — 7 to 8 ft. well rooted. A high yielder, increasingly popular. Canning.

### NARROW GRAIN EVERGREEN ILLS. 11 x 13

(Hybrid)

93 Days

Ears — 8 to 9 inch. 18 to 20 rows of deep, narrow, white kernels. Tender and sweet. Very few flag leaves. Stalk — 7 to 8 ft. sturdy. Good quality and yield. Canning.

### NARROW GRAIN EVERGREEN ILLS. 55 x 11

(Hybrid)

93 Days

Ears — 8 inch, 20 to 22 rows narrow, deep, white, kernels, good quality, tender and sweet. Very few flag leaves. Stalk — 7 to 8 ft. Sturdy. Good yielder, filling the demand for a more narrow type kernel.

### PEARL CROSS (Top Cross)

72 to 76 Days

Ears — 6 to 6½ inch. 12 rows of narrow, deep, white kernels, very tender and sweet. Stalk — 5½ ft. Usually 2 ears per stalk. A high quality early garden and market sort.

### PURGOLD (Hybrid)

85 to 90 Days

Ears — 7½ inch, 12 to 14 rows of medium width yellow kernels, of fine quality and tenderness. Uniform. Stalk — 5½ to 6 ft. A comparatively new hybrid, similar to Golden Cross, yielding high tonnage. Canning and market.



## SWEET CORN

ROGERS G Mc S (Hybrid) 85 to 90 Days

Ears—8 to 9 inch, 12 rows of deep, white kernels, medium width, tender and sweet. Cylindrical from end to end. Uniform. Stalk — 6 ft. Vigorous and hardy. A new white hybrid of fine promise. 1940 tests all satisfactory. Canning and market.

SIXTY DAY GOLDEN 60 Days

Ears — 5½ to 6 inch, 12 rows of rather wide yellow kernels of very good quality. Stalk — 5 ft. A good early market or garden corn of satisfactory ear size.

SIXTY DAY WHITE 60 Days

Ears — 5½ to 6 inch, 12 rows of rather broad white kernels of good quality. Stalk — 5 ft. Market and garden sort, ears of satisfactory size.

SPANCROSS 66 Days

Ears — Medium sized, 6 to 7 inches, about 12 rows of bright yellow kernels, uniform in maturity, good quality. Stalk — 4 to 5 ft., stocky, ears set low. Extra early, wilt resistant and somewhat resistant to cold. A cross of Inbreds C4 X C13.

STOWELLS EVERGREEN 95 to 100 Days

Ears — 8 to 9 inch, 16 rows of deep, white kernels. Stalk — 7 to 8 ft. Stock bred from selected, hardy strains. A high yielding, large eared Stowells, for canning, market and garden.

## SWEET CORN

**TENDERGOLD (Selected Top Cross)** 77 Days

Ears — 7 to 7½ inch, 12 rows of golden, narrow, deep kernels. Sweet, tender, fine quality. Stalk — 5 to 5½ ft. A hardy, satisfactory yielding strain, for canning, market or garden.

**WHIPPLES EARLY WHITE** 79 to 82 Days

Ears — 7 to 8 inch, 16 to 20 rows of good sized, white kernels, deep, wedge shaped. Usually 2 ears per stalk. Stalk — 7 ft. Ears well up, of good quality, and higher sugar content than Stowells. Market and garden.

**WHIPPLES EARLY YELLOW** 78 to 82 Days

Ears — 7 to 8 inch, 12 to 16 rows of broad, deep, yellow kernels, large eared type. Fine quality. Stalk — 5 to 6 ft. Market and garden.



## DISCARDED VARIETIES

In the interest of maximum production, we have omitted from our catalogue many varieties of peas, beans and sweet corn that we have formerly grown. All worthwhile varieties have been retained, and for every item dropped there is something better to take its place.

Poor yielding sorts and those of poor quality have no right in anyone's catalogue, as they can only bring disappointment and loss to the planter.



The Rogers Bros. Seed Company gives no warranty, express or implied, as to the productiveness of any seeds it sells and will not be in any way responsible for the crop. Our liability, in all instances, is limited to the purchase price of the seed.

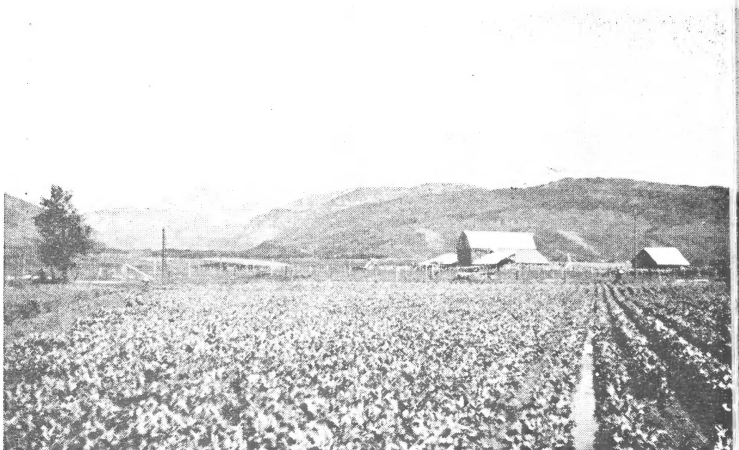


*Production Headquarters*  
**IDAHO FALLS, IDAHO**



*Sales Office*  
**CHICAGO, ILLINOIS**  
308 West Washington Street  
U. S. A.

## IDAHO PEA BREEDING RANCH



## IDAHO BEAN BREEDING RANCH



## GREEN HOUSE TRIALS – IDAHO



*Buy*  
*War Bonds*

**3 DOLLARS  
GETS YOU FOUR**

**ROGERS BROS. SEED CO.**

*Production Headquarters*  
**IDAHO FALLS, IDAHO**



*Sales Office*  
**CHICAGO, ILLINOIS**  
**308 West Washington Street**  
**U. S. A.**

**B  
L  
O  
O  
D  
  
T  
E  
L  
L  
S**